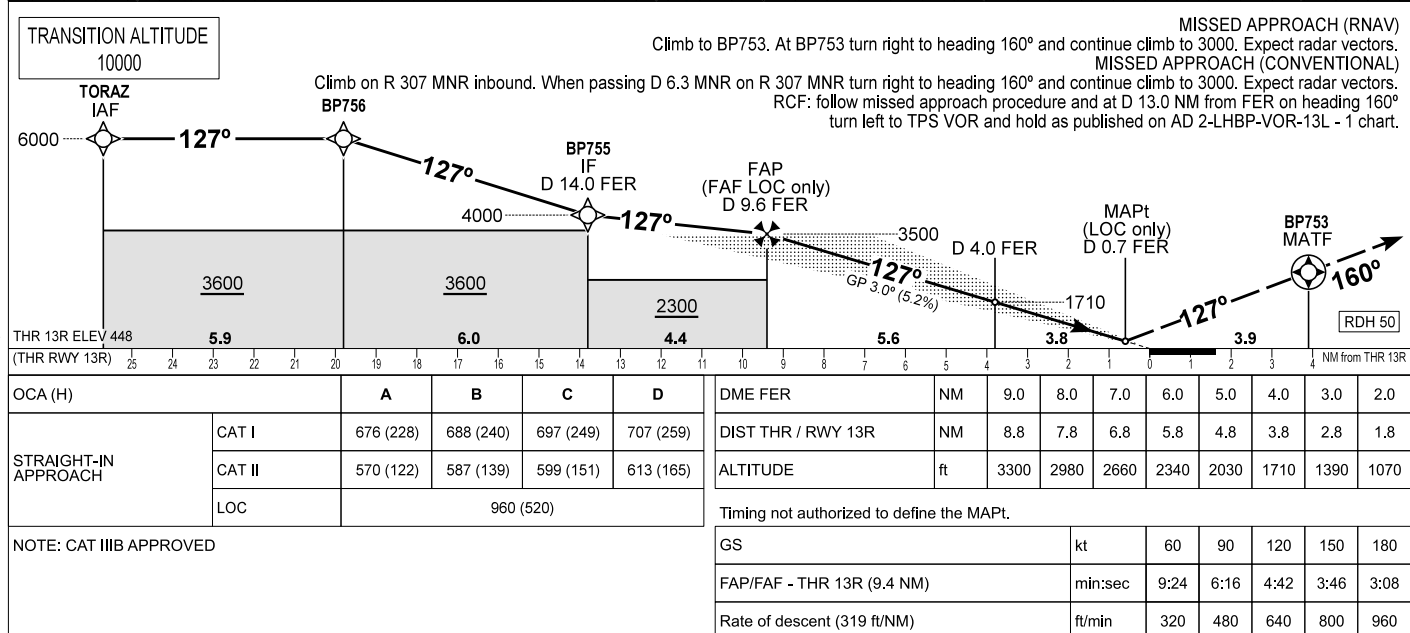
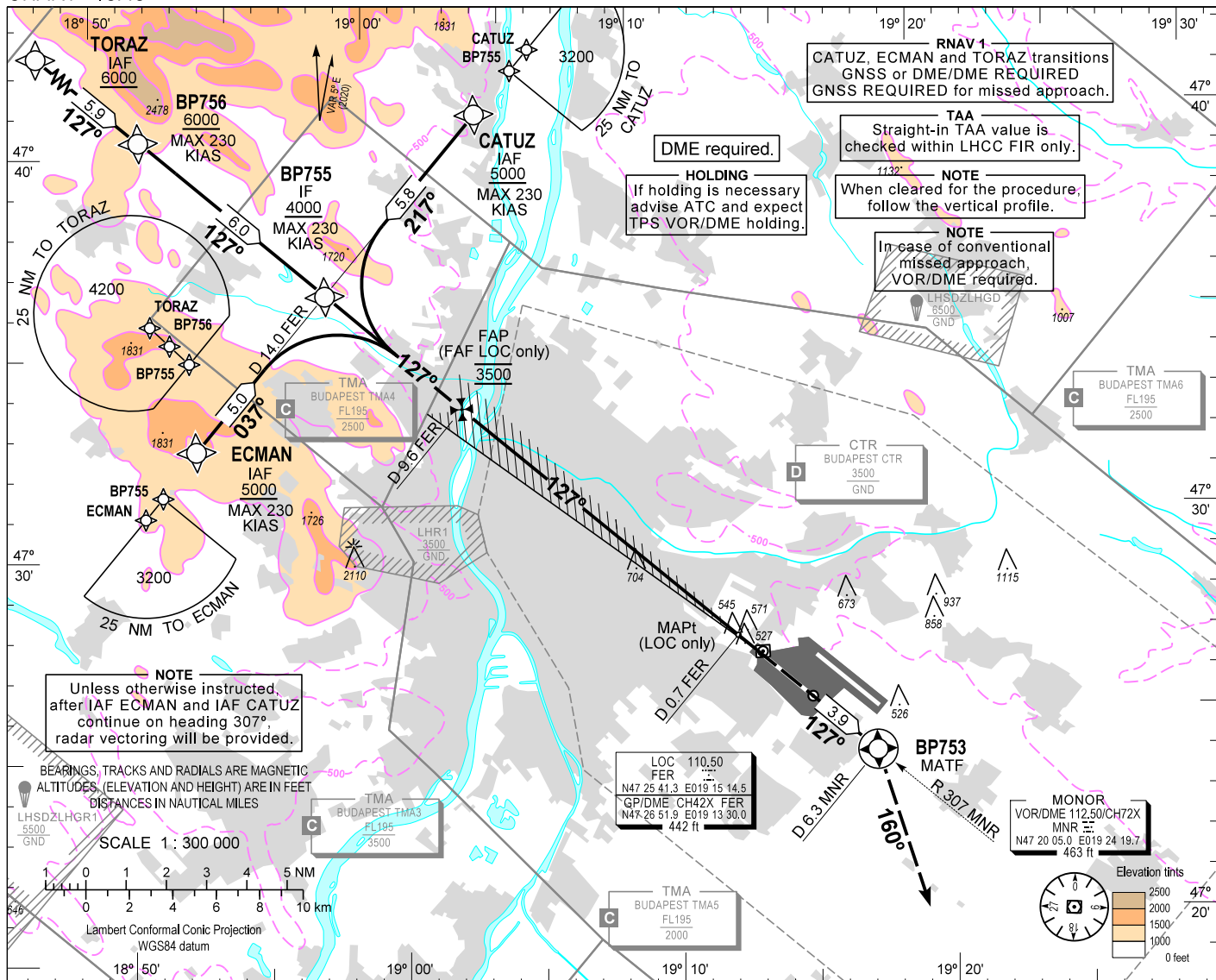


# INSTRUMENT APPROACH CHART - ICAO

AERODROME ELEV 496  
HEIGHTS RELATED TO  
THR RWY 13R - ELEV 448

BUDAPEST APP	122.980	123.860	BUDAPEST GROUND	121.905
		119.510	BUDAPEST DELIVERY	134.540
BUDAPEST TOWER	118.715		ATIS	132.380 (117.300)
BUDAPEST INFORMATION (NORTH)	119.350,	(NORTH-EAST)	134.855	

BUDAPEST/LISZT FERENC  
ILS or LOC RWY 13R  
(ACFT CAT A, B, C, D)



AD 2 LHBP INSTRUMENT APPROACH CHART ILS OR LOC RWY 13R

via TORAZ

PT	WP ID	Role	OverFly	Bearing/ (Len Dur)	Turn Direction	Altitude (FT)	IAS (KT)	VRT ANG	NAV PERF
IF	TORAZ	IAF				+6000			RNAV1
TF	BP756			131.7 T/5.9 NM		+6000	-230		RNAV1
TF	BP755	IF		132.3 T/6.0 NM		+4000	-230		RNAV1
CF	BP754	FAF		132.4 T/4.4 NM		@3500			
CF	RW13R	LTP	Y	132.3 T/9.4 NM		+498		-3.0	
TF	BP753	MATF	Y	132.4 T/3.9 NM					RNP APCH
VM				165.0 T		@3000			

via CATUZ

PT	WP ID	Role	OverFly	Bearing/ (Len Dur)	Turn Direction	Altitude (FT)	IAS (KT)	VRT ANG	NAV PERF
IF	CATUZ	IAF				+5000	-230		RNAV1
TF	BP755	IF		222.3 T/5.8 NM		+4000	-230		RNAV1
CF	BP754	FAF		132.4 T/4.4 NM		@3500			
CF	RW13R	LTP	Y	132.3 T/9.4 NM		+498		-3.0	
TF	BP753	MATF	Y	132.4 T/3.9 NM					RNP APCH
VM				165.0 T		@3000			

via ECMAN

PT	WP ID	Role	OverFly	Bearing/ (Len Dur)	Turn Direction	Altitude (FT)	IAS (KT)	VRT ANG	NAV PERF
IF	ECMAN	IAF				+5000	-230		RNAV1
TF	BP755	IF		042.4 T/5.0 NM		+4000	-230		RNAV1
CF	BP754	FAF		132.4 T/4.4 NM		@3500			
CF	RW13R	LTP	Y	132.3 T/9.4 NM		+498		-3.0	
TF	BP753	MATF	Y	132.4 T/3.9 NM					RNP APCH
VM				165.0 T		@3000			

WAYPOINT COORDINATES SEE: AD 2.22.